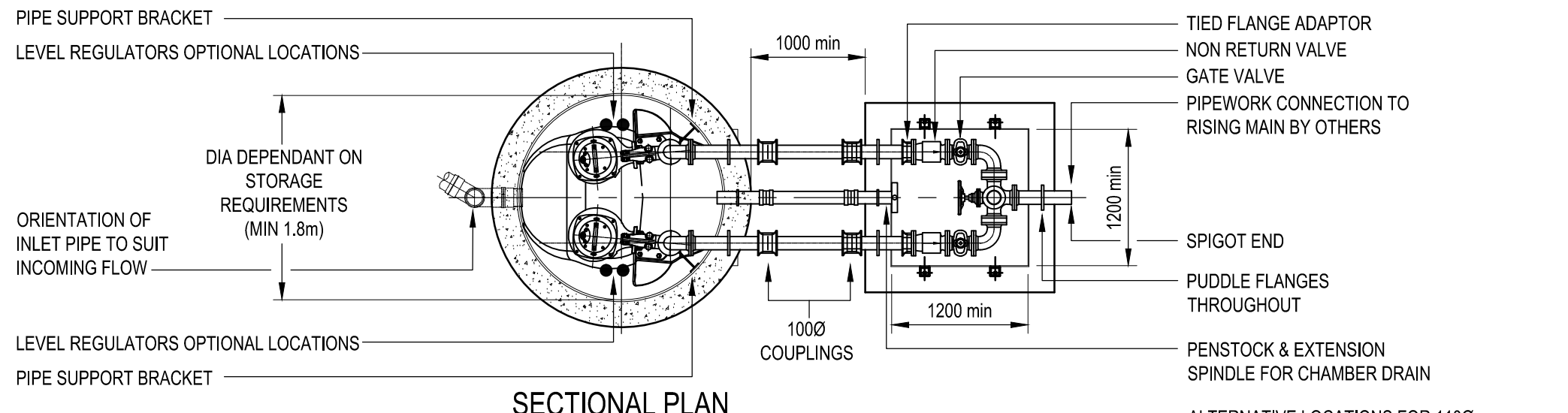
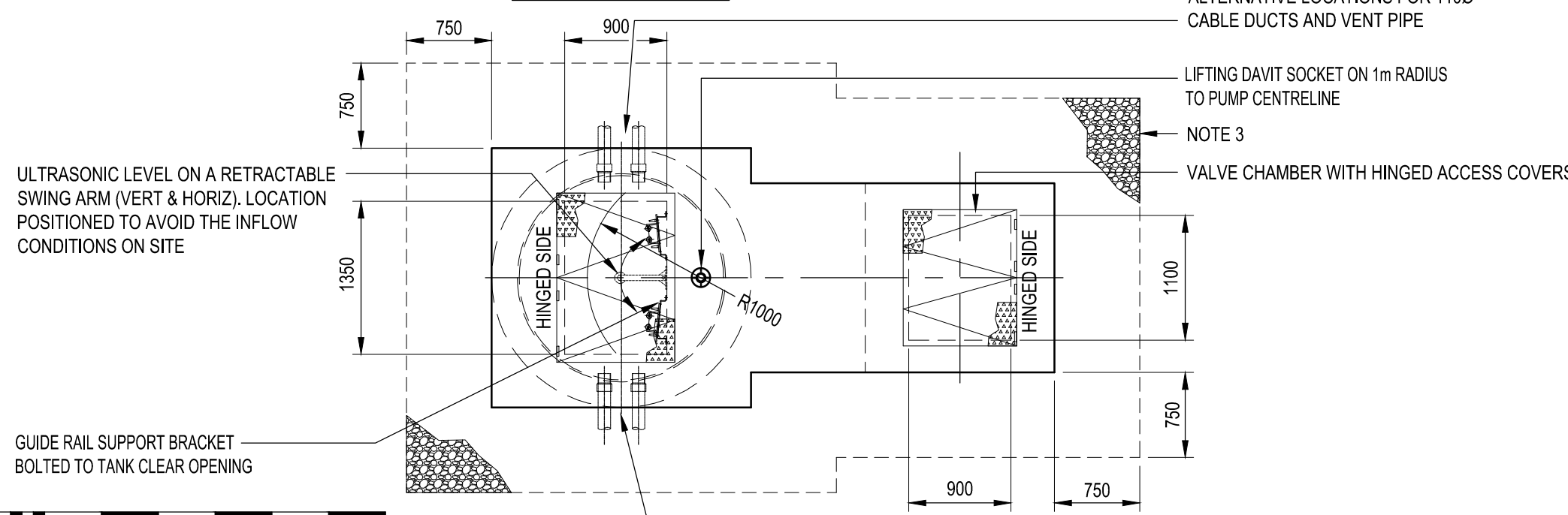


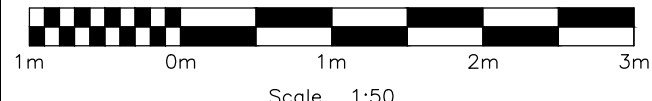
SECTIONAL ELEVATION



SECTIONAL PLAN



PLAN AT GROUND LEVEL



- NOTES:**
1. THIS DRAWING TO BE READ IN CONJUNCTION WITH CS501 (CESWI 7th EDITION) AND CS501A (DCWW CIVIL SPECIFICATION).
 2. FINISHED GROUND LEVEL TO BE AGREED AND CONFIRMED WITH LAND OWNER & DCWW LAND AGENT.
 3. WHERE PERMISSIBLE (SUBJECT TO LOCATION OF PUMPING STATION), A 750mm WIDE PERMEABLE HARDSTANDING SHALL BE PROVIDED ON ALL SIDES OF WET WELL & VALVE CHAMBER AS INDICATED ON GROUND LEVEL PLAN.
 4. CONCRETE BASE AND SURROUND THICKNESS DESIGNED IN ACCORDANCE WITH PACKAGE PUMPING STATION SUPPLIERS RECOMMENDATIONS, TO RESIST FLOTATION AND ASSOCIATED LOADINGS.
 5. PROVISION OF ADEQUATE PUMP CHAMBER VENTILATION TO ATMOSPHERE IS TO BE ENSURED. VENT SIZE TO BE A MINIMUM OF 100mm DIA. VENT TO BE TAKEN FROM A POINT AS HIGH AS PRACTICABLE ON SITE.
 6. INDICATIVE COMPOSITE GRP CHAMBERS WITH CONCRETE SURROUND SHOWN. ALTERNATIVELY, CHAMBERS MAY BE CONSTRUCTED IN REINFORCED CONCRETE SIZED TO SUIT PUMP & VALVE ARRANGEMENTS.
 7. FOR DETAILS OF CONTROL KIOSK, SEE DRAWINGS

A	FIRST ISSUE	TD	PM		JULY 2013
REV	REVISION	DRN	CHK	REVD	DATE



DCWW STANDARD DRAWINGS

GROUP:SD19
PACKAGE PUMPING STATIONS

TITLE:
PUMPING STATION TYPE 3 - 100Ø
PIPEWORK ARRANGEMENT
(PUMPED FLOWS 6L/S-14L/S)

	INITIALS	DATE	SCALES
DRAWN BY:	TD	SEPT. 2012	1:50
CHECKED BY:	PM	JULY 2013	
REVIEWED BY:	RD	JULY 2013	
DIMENSIONS IN MILLIMETRES			A3
CLIENT DRAWING NO. SDM4001/003			REV. A